

M6A Rabbit pAb

www.dia-an.cn

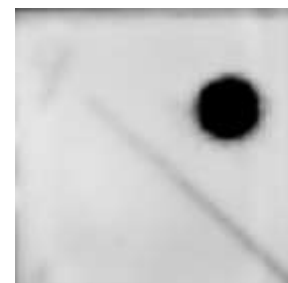
Cat#: 3162

027-59325199

sevice@dia-an.com

Only For Research. Not For Diagnosis.

Synonyms:	N6-methyladenosine; m6A
Attribute:	Rabbit Polyclonal Antibody
Isotype:	IgG
Purity:	Antigen Affinity Purification
Application:	ELISA, IP, IF, CHIP, Dot Blot
Calculated MW:	N/A
Observed MW:	N/A
Reactivity:	Human, Mouse, Rat, Zebrafish
Immunogen:	N6-methyladenosine conjugated to KLH
Buffer:	PBS with 0.1% sodium azide and 50% glycerol, pH 7.2
Storage:	Store at -20°C. Do not aliquot
Recommended Dilution:	Dot Blot: 1:5000-10000; IP: 3ug/sample; IF: 1:100-200



. 100 ng of genomic DNA from Dam + and Dam - E.coli strains have been spotted and probed with mouse anti-m6A (dilution 1 : 500)
UP: Dam +
Down: Dam -

Background:

N6-methyladenosine (m6A) is the most prevalent, abundant and conserved internal cotranscriptional modification in eukaryotic RNAs, especially within higher eukaryotic cells. Recent studies have shown that m6A RNA modification plays essential role in both physiological and pathological conditions, especially in the initiation and progression of different types of human cancers.

We focus on precise protein quantification