

## V5-Tag Rabbit pAb

www.dia-an.cn

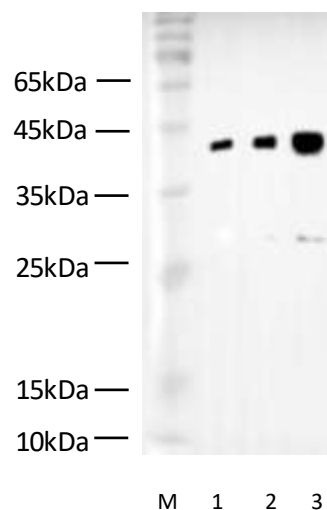
Cat#: 3130

027-59325199

sevice@dia-an.com

Only For Research. Not For Diagnosis.

<b>Synonyms:</b>	GKPIPPELLGLDST
<b>Attribute:</b>	Rabbit Polyclonal Antibody
<b>Isotype:</b>	IgG
<b>Purity:</b>	Antigen Affinity Purification
<b>Application:</b>	ELISA, WB, IP
<b>Calculated MW:</b>	N/A
<b>Observed MW:</b>	N/A
<b>Reactivity:</b>	Human, Mouse, Rat, Zebra fish et al.
<b>Immunogen:</b>	Peptide GKPIPPELLGLDST
<b>Buffer:</b>	PBS with 0.1% sodium azide and 50% glycerol, pH 7.2
<b>Storage:</b>	Store at -20°C. Do not aliquot
<b>Recommended Dilution:</b>	WB: 1:2000-5000 IP: 3ug/sample IF: 1:100-200



Western Blotting of V5-Tag fused recombinant protein (43kDa) with Anti-V5 rabbit polyclonal antibody at dilution of lane 1: 1:4000; lane 2: 1:2000; lane 3 1:1000

### Background:

The V5 epitope tag is derived from a small epitope (Pk) present on the P and V proteins of the paramyxovirus of simian virus (SV5). The V5 tag is usually used with all 14 amino acids (GKPIPPELLGLDST), although it has also been used with a shorter 9 amino acid sequence (IPNPELLGLD).

We focus on precise protein quantification