

MYC-Tag Rabbit mAb

www.dia-an.cn

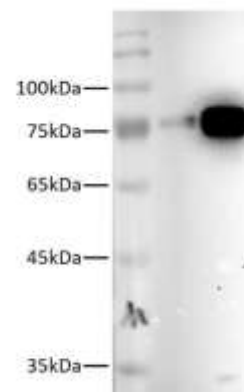
Cat#: 3097R

027-59325199

sevice@dia-an.com

Only For Research. Not For Diagnosis.

Synonyms:	EQKLISEEDL
Attribute:	Rabbit monoclonal Antibody
Isotype:	IgG
Purity:	Antigen Affinity Purification
Application:	ELISA, WB, IP, IF
Calculated MW:	N/A
Observed MW:	N/A
Reactivity:	Proteins fused with MYC tag
Immunogen:	Peptide EQKLISEEDL
Buffer:	PBS with 0.1% sodium azide and 50% glycerol, pH 7.2
Storage:	Store at -20°C. Do not aliquot
Recommended Dilution:	WB: 1:1000-1:10,000 IP: 5ug/sample IF: 1:100-1:500



Western Blotting of MYC-Tag fused recombinant protein with Anti-MYC rabbit monoclonal antibody at dilution of 1:5000.

Background:

The MYC tag, derived from the c-MYC protein, is a popular epitope tag for detecting the expression of recombinant proteins in yeast, bacteria, insect, and mammalian cell systems. It can be used for affinity chromatography, then used to separate recombinant, overexpressed protein from wild type protein expressed by the host organism. It can also be used in the isolation of protein complexes with multiple subunits.

We focus on precise protein quantification