

# Phospho Tyrosine Rabbit Polyclonal Antibody

www.dia-an.cn

Cat#: 3096

027-59325199

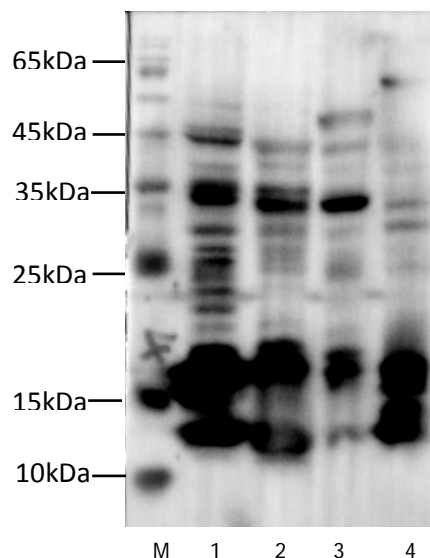
sevice@dia-an.com

Only For Research. Not For Diagnosis.

<b>Attribute:</b>	Rabbit Polyclonal Antibody
<b>Isotype:</b>	IgG
<b>Purity:</b>	Antigen Affinity Purification
<b>Application:</b>	WB, IP, ELISA
<b>Reactivity:</b>	phospho Tyrosine Protein
<b>Immunogen:</b>	phospho Tyrosine BSA
<b>Buffer:</b>	PBS with 0.1% sodium azide and 50% glycerol, pH 7.2
<b>Storage:</b>	Store at -20°C. Do not aliquot
<b>Recommended Dilution:</b>	WB: 1:1000-2000 IP: 1:5000-10000

## Background:

Most phosphorylation occurs on serine and threonine, with less than 1% on tyrosine. Tyrosine phosphorylation is involved in regulating a variety of cellular processes. In particular, protein tyrosine phosphorylation is important for signaling pathways initiated by growth factors and cytokines, which regulate cellular proliferation and differentiation, metabolism, cytoskeletal reorganization, and the immune response.



Western blot of anti- Phospho Tyrosine Rabbit Polyclonal Antibody at dilution of 1:1000

Lane 1: McF7

Lane 2: Mouse Testis

Lane 3: Rat Brain

Lane 4: Zebra Fish