

BCL-2 Rabbit Polyclonal Antibody

www.dia-an.cn

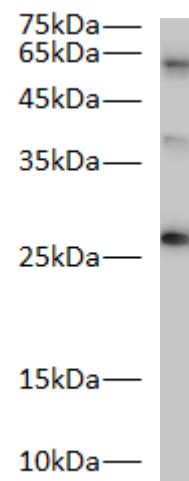
Cat#: 3085

027-59325199

sevice@dia-an.com

Only For Research. Not For Diagnosis.

Synonyms:	Bcl2a; B-cell leukemia/lymphoma 2
Attribute:	Rabbit Polyclonal Antibody
Isotype:	Polyclonal
Purity:	Antigen Affinity Purification
Application:	ELISA, WB, IP
Calculated MW:	26kDa and 40kDa
Observed MW:	26kDa
Reactivity:	Zebra fish
Immunogen:	Peptide corresponding to zebrafishBCL-2
Buffer:	PBS with 0.1% sodium azide and 50% glycerol, pH 7.2
Storage:	Store at -20°C. Do not aliquot
Recommended Dilution:	WB: 1:1000-2000 IP: 1:5000-10000 IF: 1:100-200



Western blot of Zebra Fish whole lysates with anti-BCL-2 Rabbit Polyclonal Antibody at dilution of 1:1000

Background:

Bcl-2 (B-cell lymphoma 2), is the founding member of the Bcl-2 family of regulator proteins that regulate cell death (apoptosis), by either inducing (pro-apoptotic) or inhibiting (anti-apoptotic) apoptosis. In mammals, it is found to be associated with non-Hodgkin's lymphoma that normally helps regulate the life span of a white blood cell but when mutated prevents such cells from dying, allowing possible further mutations and the development of cancer.

We focus on precise protein quantification