

Caspase-3 Rabbit Polyclonal Antibody

www.dia-an.cn

Cat#: 3082

027-59325199

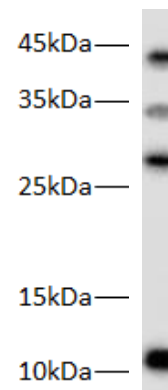
sevice@dia-an.com

Only For Research. Not For Diagnosis.

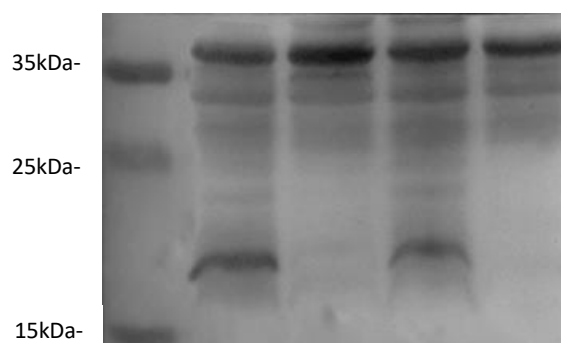
Synonyms:	apoptosis-related cysteine protease a; casp3a
Attribute:	Rabbit Polyclonal Antibody
Isotype:	Polyclonal
Purity:	Antigen Affinity Purification
Application:	ELISA, WB, IP, IF
Calculated MW:	40kDa
Observed MW:	12+30+40kDa
Reactivity:	Zebra fish
Immunogen:	Peptide corresponding to Zebra fish Casapase-3
Buffer:	PBS with 0.1% sodium azide and 50% glycerol, pH 7.2
Storage:	Store at -20°C. Do not aliquot
Recommended Dilution:	WB: 1:1000-2000 IP: 1:5000-10000 IF: 1:100-200

Background:

Caspase-3 is a caspase protein that interacts with caspase-8 and caspase-9. It is encoded by the CASP3 gene. CASP3 orthologs have been identified in numerous mammals for which complete genome data are available. Unique orthologs are also present in birds, lizards, lissamphibians, and teleosts.



Western blot of Zebra Fish whole lysates with anti-Caspase-3 Rabbit Polyclonal Antibody at dilution of 1:1000



Western blot of Zebra Fish whole lysates with anti-Caspase-3 Rabbit Polyclonal Antibody at dilution of 1:1000

Lane 1,3: Wild Type Zebra fish
Lane 2,4: PVMK knock-out Zebra fish

We focus on precise protein quantification

DIA • AN