

Caspase-1 Rabbit Polyclonal Antibody

www.dia-an.cn

Cat#: 3081

027-59325199

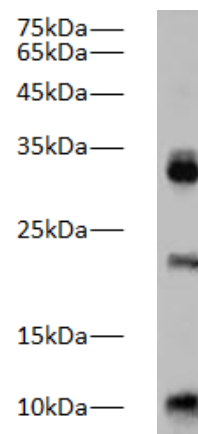
sevice@dia-an.com

Only For Research. Not For Diagnosis.

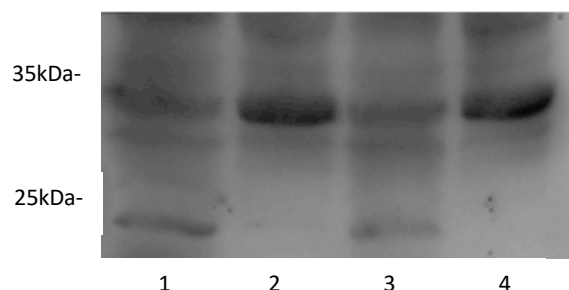
Synonyms:	caspase a
Attribute:	Rabbit Polyclonal Antibody
Isotype:	Polyclonal
Purity:	Antigen Affinity Purification
Application:	ELISA, WB, IP
Calculated MW:	44kDa
Observed MW:	10+20+30+44kDa
Reactivity:	Zebra fish
Immunogen:	Peptide corresponding to zebra fish caspase-1
Buffer:	PBS with 0.1% sodium azide and 50% glycerol, pH 7.2
Storage:	Store at -20°C. Do not aliquot
Recommended Dilution:	WB: 1:1000-2000 IP: 1:5000-10000 IF: 1:100-200

Background:

CASP1(caspase-1) is also named as IL1BC, IL1BCE and belongs to the peptidase C14A family. It is a cysteine protease that regulates inflammatory processes through its capacity to process and activate the interleukin-1-beta (IL1B), IL18, and IL33 precursor proteins. The active caspase-1 can increase cellular membrane permeability and intracellular calcium levels, which facilitates lysosome exocytosis and release of host antimicrobial factors and microbial products



Western blot of Zebra Fish whole lysates with anti-Caspase-1 Rabbit Polyclonal Antibody at dilution of 1:1000



Western blot of Zebra Fish whole lysates with anti-Caspase-1 Rabbit Polyclonal Antibody at dilution of 1:1000

Lane 1,3: Wild Type Zebra fish
Lane 2,4: PVMK knock-out Zebra fish

We focus on precise protein quantification