

GST-Tag Rabbit mAb

www.dia-an.cn

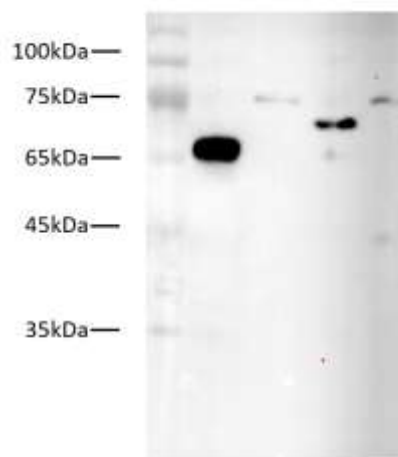
Cat#: 3077R

027-59325199

sevice@dia-an.com

Only For Research. Not For Diagnosis.

Synonyms:	Glutathione-S-transferase
Attribute:	Rabbit monoclonal Antibody
Isotype:	IgG
Purity:	Antigen Affinity Purification
Application:	ELISA, WB, IP, IF
Calculated MW:	N/A
Observed MW:	N/A
Reactivity:	GST-Fused Protein
Immunogen:	GST expressed by E.coli
Buffer:	PBS with 0.1% sodium azide and 50% glycerol, pH 7.2
Storage:	Store at -20°C. Do not aliquot
Recommended Dilution:	WB: 1:2000-5000 IP: 3ug/sample



Western blot of 4 different bacterial lysates with GST-tagged protein expression.

Background:

GST, Glutathione-S-transferase, a 26 kDa sequence of 211 amino acids, is another widely used affinity tag that increases solubility of the desired protein. GST tag has affinity for immobilized glutathione and is used for prokaryotic expression more frequently. It can be fused to either the N-terminus or C-terminus of a protein.