

Dimethyl Lysine Rabbit Polyclonal Antibody

www.dia-an.cn

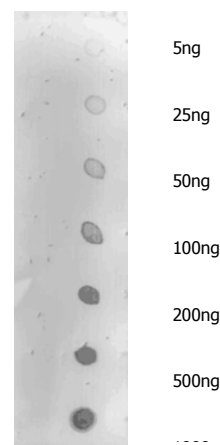
Cat#: 3068

027-59325199

sevice@dia-an.com

Only For Research. Not For Diagnosis.

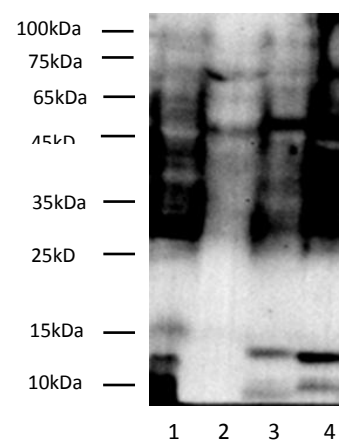
Attribute:	Rabbit Polyclonal Antibody
Isotype:	IgG
Purity:	Antigen Affinity Purification
Application:	WB, IP, ELISA
Reactivity:	Human, mouse, rat, Zebra fish
Immunogen:	Dimethyl Protein
Buffer:	PBS with 0.1% sodium azide and 50% glycerol, pH 7.2
Storage:	Store at -20°C. Do not aliquot
Recommended Dilution:	WB: 1:1000-2000 IP: 1:100-500



Dot blotting analysis of antibody 3068 on indicated amount of unmodified BSA and dimethyl BSA , with 1:2000 dilution.

Background:

In proteins, lysine residue can be methylated once, twice or thrice on its terminal sidechain ammonium group. Such methylated lysines play an important role in epigenetics; the methylation of specific lysines of certain histones in a nucleosome alters the binding of the surrounding DNA to those histones, which in turn affects the expression of genes on that DNA.



Western Blotting of Dimethyl-Lysine Rabbit PAb on Lane 1 E.Coli; Lane 2 Mouse Thymus; Lane 3 Mouse Brain, and Lane 4 Hela cell lysates with 1:500 dilution.

We focus on precise protein quantification