

Acetylated Lysine Rabbit Polyclonal Antibody

www.dia-an.cn

Cat#: 3067

027-59325199

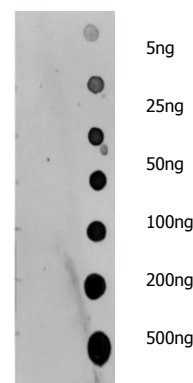
sevice@dia-an.com

Only For Research. Not For Diagnosis.

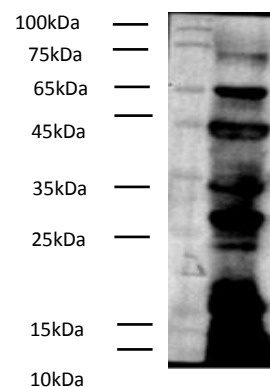
Attribute:	Rabbit Polyclonal Antibody
Isotype:	IgG
Purity:	Antigen Affinity Purification
Application:	WB, IP
Reactivity:	Human, mouse, rat, Zebra fish
Immunogen:	Acetylated Protein
Buffer:	PBS with 0.1% sodium azide and 50% glycerol, pH 7.2
Storage:	Store at -20°C. Do not aliquot
Recommended Dilution:	WB: 1:1000-2000 IP: 1:100-500

Background:

Acetylation is an important modification of proteins in cell biology. Acetylation occurs in thousands of proteins involved in control of cell cycle and metabolism, longevity, actin polymerization, and nuclear transport. Among these proteins, chromatin proteins and metabolic enzymes are highly represented, indicating that acetylation has a considerable impact on gene expression and metabolism. This antibody is a pan anti-acetylated lysine polyclonal antibody purified with acetylated lysine affinity chromatography. It specifically recognizes proteins with acetyl lysine residues. It works well in Western blotting and Immunoprecipitation, which makes it especially useful in systematically proteomic screening.



Dot blotting analysis of antibody 3067 on indicated amount of unmodified BSA and acetylated BSA , with 1:2000 dilution.



Western Blotting of antibody 3067 on E.Coli lysates at 1:500 dilution.

We focus on precise protein quantification