

## FLAG-Tag Rabbit pAb

www.dia-an.cn

Cat#: 3064

027-59325199

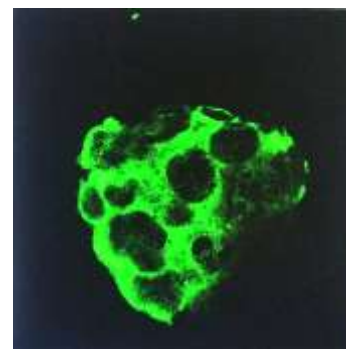
sevice@dia-an.com

Only For Research. Not For Diagnosis.

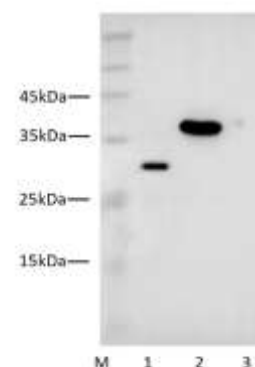
<b>Synonyms:</b>	DYKDDDDK
<b>Attribute:</b>	Rabbit Polyclonal Antibody
<b>Isotype:</b>	
<b>Purity:</b>	Antigen Affinity Purification
<b>Application:</b>	ELISA, WB, IP, IF
<b>Calculated MW:</b>	34kDa
<b>Observed MW:</b>	34kDa
<b>Reactivity:</b>	Human, Mouse, Rat, Zebra fish
<b>Immunogen:</b>	Peptide DYKDDDDK
<b>Buffer:</b>	PBS with 0.1% sodium azide and 50% glycerol, pH 7.2
<b>Storage:</b>	Store at -20°C. Do not aliquot
<b>Recommended Dilution:</b>	WB: 1:2000-50000 IP: 3ug/sample IF: 1:100-200

### Background:

FLAG-tag is a polypeptide protein tag that can be added to a protein using recombinant DNA technology, having the sequence motif DYKDDDDK. It has been used for studying proteins in living cells and for protein purification by affinity chromatography. This antibody detects FLAG tag in most applications..



HeLa cells transfected with the plasmid over-expressing 3xFLAG Fusion Protein, using anti Flag antibody at 1:200 dilution



Western blot of Flag-tagged fusion protein with anti-Flag antibody (Cat#: 3064) at dilution of 1:10000

Lane 1: 293 cell transfected with Flag-GFP  
Lane 2: 293 cell transfected with 35kDa Flag tagged Protein  
Lane 3: mock-transfected HEK 293 cells