

**Cat#: 3060**

www.dia-an.cn

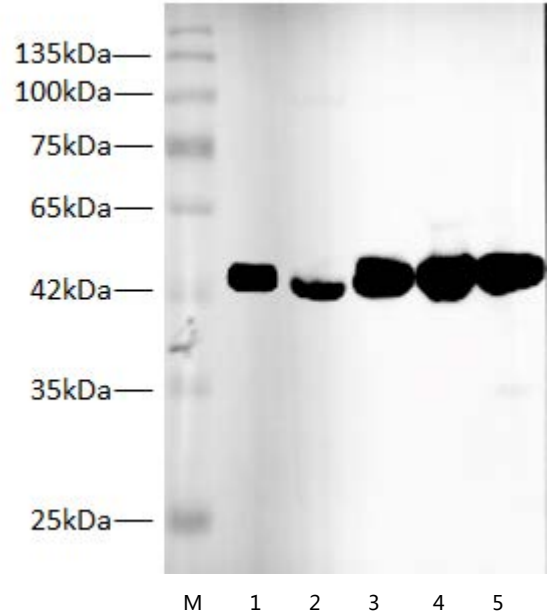
## Anti-beta Actin Rabbit PAb

027-59325199

sevice@dia-an.com

Only For Research. Not For Diagnosis.

<b>Synonyms:</b>	ACTB, Actin, actin, beta, Beta actin
<b>Attribute:</b>	Rabbit Polyclonal Antibody
<b>Isotype:</b>	IgG
<b>Purity:</b>	Antigen Affinity Purification
<b>Application:</b>	ELISA, WB, IP, IF
<b>Calculated MW:</b>	43kDa
<b>Observed MW:</b>	43kDa
<b>Reactivity:</b>	Human,Mouse,Rat,Zebra fish
<b>Immunogen:</b>	Recombinant Human Beta actin protein
<b>Buffer:</b>	PBS with 0.1% sodium azide and 50% glycerol, pH 7.2
<b>Storage:</b>	Store at -20°C. Do not aliquot
<b>Recommended Dilution:</b>	WB: 1:5000-10000 IP: 3ug/sample IF: 1:100-200



Western Blotting of anti-beta Actin Rabbit Polyclonal antibody at dilution of 1:1000

Lane 1: Human Placenta  
Lane 2: HEK 293 cell,  
Lane 3: Mouse Spleen  
Lane 4: Mouse Kidney  
Lane 5: Zebra Fish

### Background:

Beta-actin (ACTB/ACTB) is one of six different actin isoforms in humans. Actins are highly conserved proteins that are involved in cell motility, structure and integrity. Beta actin is a major constituent of the contractile apparatus and one of the two nonmuscle cytoskeletal actins. Beta-actin gene is stably and constitutively expressed at high levels in most tissues and cells, and commonly used as a loading control for western blot and as a control for qPCR.

We focus on precise protein quantification