

PPP1R3G Rabbit Polyclonal Antibody

www.dia-an.cn

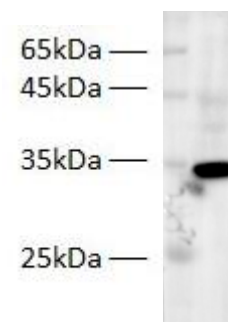
Cat#: 30346

027-59325199

sevice@dia-an.com

Only For Research. Not For Diagnosis.

Synonyms:	si:ch211-152c8.5; fi17a12; ppp1r3g
Attribute:	Rabbit Polyclonal Antibody
Isotype:	Polyclonal
Purity:	Antigen Affinity Purification
Application:	ELISA, WB
Calculated MW:	30kDa
Observed MW:	30kDa
Reactivity:	Zebra Fish
Immunogen:	Recombinant Human PPP1R3G protein expressed by E.Coli
Buffer:	PBS with 0.1% sodium azide and 50% glycerol, pH 7.2
Storage:	Store at -20°C. Do not aliquot
Recommended Dilution:	WB: 1:1000-2000 IP: 1:5000-10000 IF: 1:100-200



Western blot of Zebra Fish whole lysates with anti-PPP1R3G Rabbit Polyclonal Antibody at dilution of 1:500

Background:

Glycogen-targeting subunit for protein phosphatase 1 (PP1). Involved in the regulation of hepatic glycogenesis in a manner coupled to the fasting-feeding cycle and distinct from other glycogen-targeting subunits.

We focus on precise protein quantification