

RBP Rabbit Polyclonal Antibody

www.dia-an.cn

Cat#: 3025

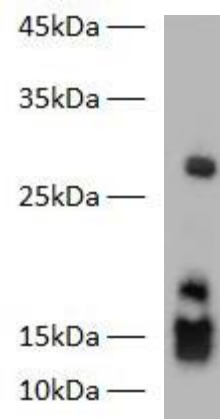
027-59325199

sevice@dia-an.com

Only For Research. Not For Diagnosis.

Synonyms:

| | |
|------------------------------|--|
| Attribute: | Rabbit Polyclonal Antibody |
| Isotype: | IgG |
| Purity: | Antigen Affinity Purification |
| Application: | ELISA, WB, IP |
| Calculated MW: | 15kDa |
| Observed MW: | 15kDa,20kDa |
| Reactivity: | Human,Mouse,Rat,Zebra fish |
| Immunogen: | Recombinant Human RBP protein expressed by E.Coli |
| Buffer: | PBS with 0.1% sodium azide and 50% glycerol, pH 7.2 |
| Storage: | Store at -20°C. Do not aliquot |
| Recommended Dilution: | WB: 1:1000-2000 IP: 1:5000-10000 IF: 1:100-200 |



Western blot of Zebra Fish whole lysates with anti-RBP Rabbit Polyclonal Antibody at dilution of 1:1000

Background:

Retinol-binding protein is a low-molecular-weight protein of 21 kDa that transports retinol from the liver to peripheral tissues. An increase in the urinary excretion of retinol-binding protein indicates proximal tubule injury and/or impaired proximal tubular function. Measurement of retinol-binding protein in urine is a useful aid in the monitoring and/or diagnosis of kidney disease..

We focus on precise protein quantification