

EPT1 Rabbit Polyclonal Antibody

www.dia-an.cn

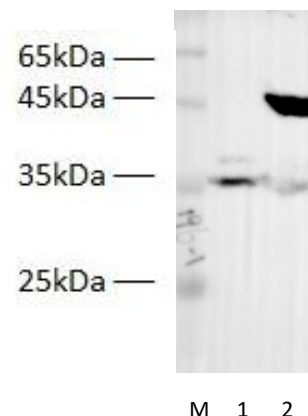
Cat#: 30196

027-59325199

sevice@dia-an.com

Only For Research. Not For Diagnosis.

Synonyms:	Selenoi selenoprotein I; Ept1; SELI
Attribute:	Rabbit Polyclonal Antibody
Isotype:	Polyclonal
Purity:	Antigen Affinity Purification
Application:	ELISA, WB
Calculated MW:	45kDa
Observed MW:	45kDa
Reactivity:	Human, Mouse, Rat, Zebra Fish
Immunogen:	Peptide
Buffer:	PBS with 0.1% sodium azide and 50% glycerol, pH 7.2
Storage:	Store at -20°C. Do not aliquot
Recommended Dilution:	WB: 1:1000-2000 IP: 1:5000-10000 IF: 1:100-200



Western blot with 30196 at dilution of 1:500.

Lane1: Mouse Heart Lysates

Lane 2: Mouse Brain Lysates

Background:

The multi-pass transmembrane protein encoded by this gene belongs to the CDP-alcohol phosphatidyltransferase class-I family. It catalyzes the transfer of phosphoethanolamine from CDP-ethanolamine to diacylglycerol to produce phosphatidylethanolamine, which

We focus on precise protein quantification