

# VASA Rabbit Polyclonal Antibody

www.dia-an.cn

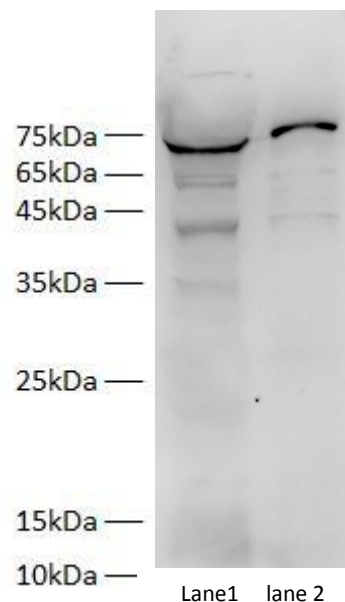
Cat#: 3008

027-59325199

sevice@dia-an.com

Only For Research. Not For Diagnosis.

<b>Synonyms:</b>	DEAD (Asp-Glu-Ala-Asp) box polypeptide 4; ddx4;
<b>Attribute:</b>	Rabbit Polyclonal Antibody
<b>Isotype:</b>	IgG
<b>Purity:</b>	Antigen Affinity Purification
<b>Application:</b>	ELISA, WB, IP
<b>Calculated MW:</b>	77kDa
<b>Observed MW:</b>	75kD
<b>Reactivity:</b>	Zebra fish
<b>Immunogen:</b>	Recombinant Human VASA protein expressed by E.Coli
<b>Buffer:</b>	PBS with 0.1% sodium azide and 50% glycerol, pH 7.2
<b>Storage:</b>	Store at -20°C. Do not aliquot
<b>Recommended Dilution:</b>	WB: 1:1000-2000 IP: 1:5000-10000 IF: 1:100-200



Western blot of ricefield eel (lane 1) and Zebra Fish (lane 2) whole lysates with anti-VASA Rabbit Polyclonal Antibody at dilution of 1:1000

## Background:

Vasa is an RNA binding protein with an ATP-dependent RNA helicase that is a member of the DEAD box family of proteins. The vasa gene, is essential for germ cell development and was first identified in *Drosophila melanogaster*, but has since been found to be conserved in a variety of vertebrates and invertebrates including humans.[2][3] The Vasa protein is found primarily in germ cells in embryos and adults, where it is involved in germ cell determination and function, as well as in multipotent stem cells, where its exact function is unknown..

We focus on precise protein quantification