

## FLAG-Tag mouse mAb

www.dia-an.cn

Cat#: 2064

027-59325199

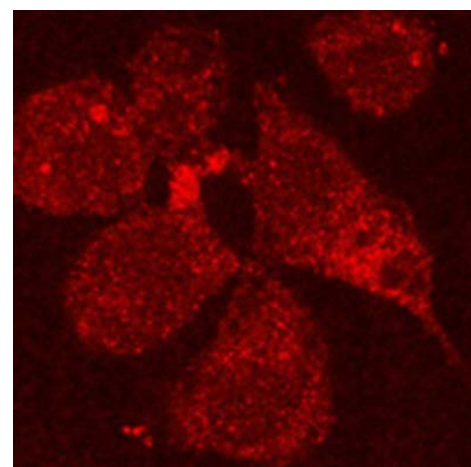
sevice@dia-an.com

Only For Research. Not For Diagnosis.

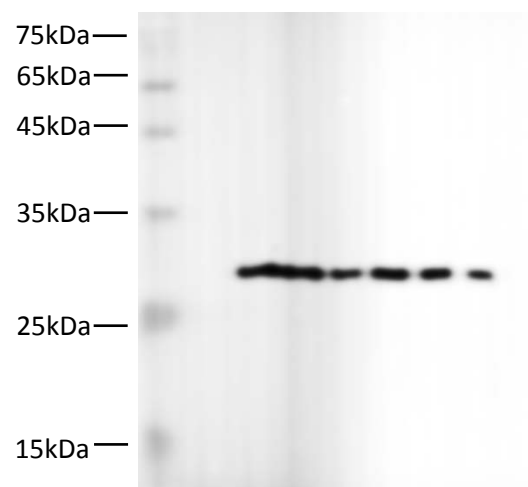
|                              |   |
|------------------------------|---|
| <b>Synonyms:</b>             | DYKDDDDK  |
| <b>Attribute:</b>            | Mouse Monoclonal Antibody                           |
| <b>Isotype:</b>              | IgG2a   |
| <b>Purity:</b>               | Antigen Affinity Purification                       |
| <b>Application:</b>          | ELISA, WB, IP, IF,ChIP                              |
| <b>Calculated MW:</b>        |   |
| <b>Observed MW:</b>          |   |
| <b>Reactivity:</b>           | Human,Mouse,Rat,Zebra fish                          |
| <b>Immunogen:</b>            | Peptide DYKDDDDK                                    |
| <b>Buffer:</b>               | PBS with 0.1% sodium azide and 50% glycerol, pH 7.2 |
| <b>Storage:</b>              | Store at -20°C. Do not aliquot                      |
| <b>Recommended Dilution:</b> | WB: 1:5000-10000<br>IP: 3ug/sample<br>IF: 1:100-200 |

### Background:

FLAG-tag is a polypeptide protein tag that can be added to a protein using recombinant DNA technology, having the sequence motif DYKDDDDK. It has been used for studying proteins in living cells and for protein purification by affinity chromatography. This antibody detects FLAG tag in most applications..



293T cells transfected with the plasmid over- expressing 3xFLAG-CMV-10-FASN, using anti Flag antibody at 1:200 dilution



1 2 3 4 5 6

Western Blotting of FLAG-GFP fusion protein expressed by HEK293 cells.

Lane 1,2: dilution of 1:2500

Lane 3,4 : dilution of 1:5000

Lane 5,6 : dilution of 1:10000

We focus on precise protein quantification

 DIA • AN