

Anti- Beta Actin Mouse mAb

www.dia-an.cn

Cat#: 2060

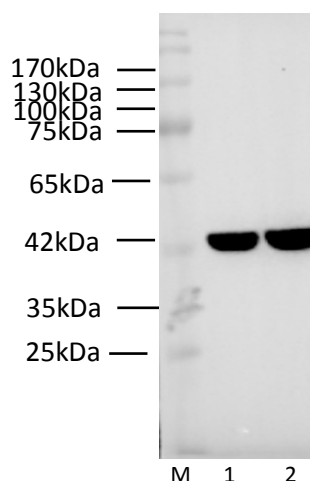
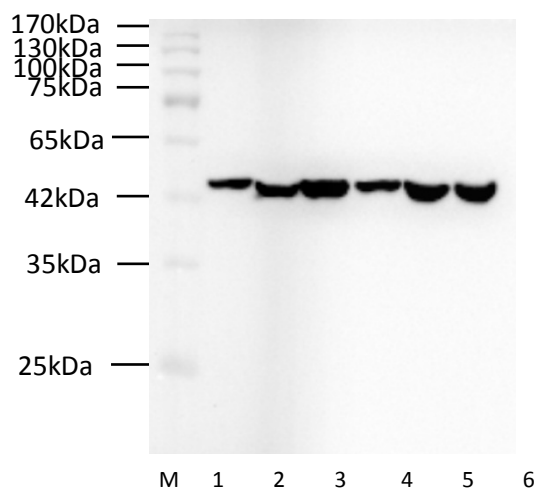
027-59325199

sevice@dia-an.com

Synonyms:	ACTB, Actin, actin, beta, Beta actin
Attribute:	Mouse Monoclonal Antibody
Isotype:	IgG2a
Purity:	Antigen Affinity Purification
Application:	ELISA, WB, IP, IF
Calculated MW:	43kDa
Observed MW:	43kDa
Reactivity:	Human,Mouse,Rat,Zebra fish
Immunogen:	Recombinant Human Beta actin protein
Buffer:	PBS with 0.1% sodium azide and 50% glycerol, pH 7.2
Storage:	Store at -20°C. Do not aliquot
Recommended Dilution:	WB: 1:5000-10000 IP: 1:5000-10000 IF: 1:100-200

Background:

Beta-actin (ACTB/ACTB) is one of six different actin isoforms in humans. Actins are highly conserved proteins that are involved in cell motility, structure and integrity. Beta actin is a major constituent of the contractile apparatus and one of the two nonmuscle cytoskeletal actins. Beta-actin gene is stably and constitutively expressed at high levels in most tissues and cells, and commonly used as a loading control for western blot and as a control for qPCR.



We focus on precise protein quantification


Western blot of Zebrafish whole lysate with anti-H2A Rabbit Polyclonal Antibody at dilution of 1:1000