

Cat#: 3074

www.dia-an.cn

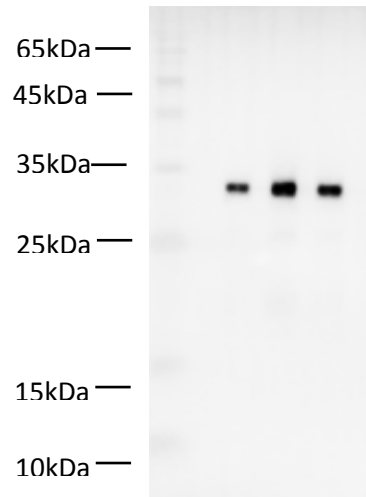
Anti-Sumo Tag Rabbit PAb

027-59325199

sevice@dia-an.com

Only For Research. Not For Diagnosis.

Synonyms:	Small Ubiquitin-like Modifier, SUMO Tag
Attribute:	Rabbit Polyclonal Antibody
Isotype:	IgG
Purity:	Antigen Affinity Purification
Application:	ELISA, WB, IP, IF
Calculated MW:	20kDa
Observed MW:	MW of fusion protein
Immunogen:	Recombinant Sumo protein
Buffer:	PBS with 0.1% sodium azide and 50% glycerol, pH 7.2
Storage:	Store at -20°C. Do not aliquot
Recommended Dilution:	WB: 1:5000-10000 IP: 3ug/sample IF: 1:100-200



Western blot of Sumo-tagged fusion protein(30kDa) with anti-Sumo antibody (Cat# : 3074) at dilution of 1:1000

Background:

SUMO is short for Small Ubiquitin-like Modifier, the 100 amino acid sequence, which is necessary for regulation of protein transport and is important for controlling transcription for eukaryotic cells. Sumo tag is most frequently used as N-end fusion sequence in yeast to increase the expression and solubility of the desired recombinant protein. SUMO-tag gene fusion acts as both a chaperonin and as an initiator of protein folding in both prokaryotic and eukaryotic systems. Addition of this tag enables protein experts to increase the expression levels of recombinant proteins and to significantly improve protein solubility.

We focus on precise protein quantification