

Anti-Beta Tubulin mouse mAb

www.dia-an.cn

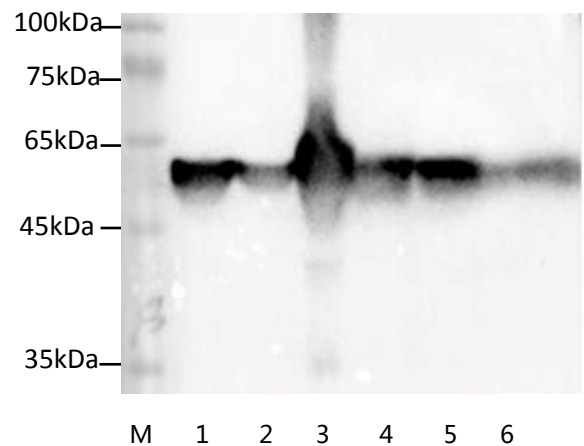
Cat#: 2062

027-59325199

sevice@dia-an.com

Only For Research. Not For Diagnosis.

Synonyms:	beta Tubulin
Attribute:	Mouse Monoclonal Antibody
Isotype:	IgG2a
Purity:	Antigen Affinity Purification
Application:	ELISA, WB, IP, IF
Calculated MW:	55kDa
Observed MW:	55kDa
Reactivity:	Human,Mouse,Rat,Zebra fish
Immunogen:	Recombinant Human TUBB protein
Buffer:	PBS with 0.1% sodium azide and 50% glycerol, pH 7.2
Storage:	Store at -20°C. Do not aliquot
Recommended Dilution:	WB: 1:5000-10000 IP: 1:5000-10000 IF: 1:100-200



Western Blotting with anti-Beta Tubulin monoclonal antibody at dilution of 1:3000

Lane 1: HEK 293 cell lysates

Lane 2: CHO cell lysates

Lane 3: Mouse Brain lysates

Lane 4: Scallop Muscle lysates

Lane 5: Zebra Fish lysates

Lane 6: E.coli (BI21) lysates

Background:

In eukaryotes there are six members of the tubulin superfamily. α - and β -tubulins polymerize into microtubules, a major component of the eukaryotic cytoskeleton. Microtubules function in many essential cellular processes, including mitosis. Both α and β tubulins have a mass of around 50 kDa. Tubulin was long thought to be specific to eukaryotes. Beta-tubulin gene is commonly used as a loading control for western blot.

We focus on precise protein quantification